

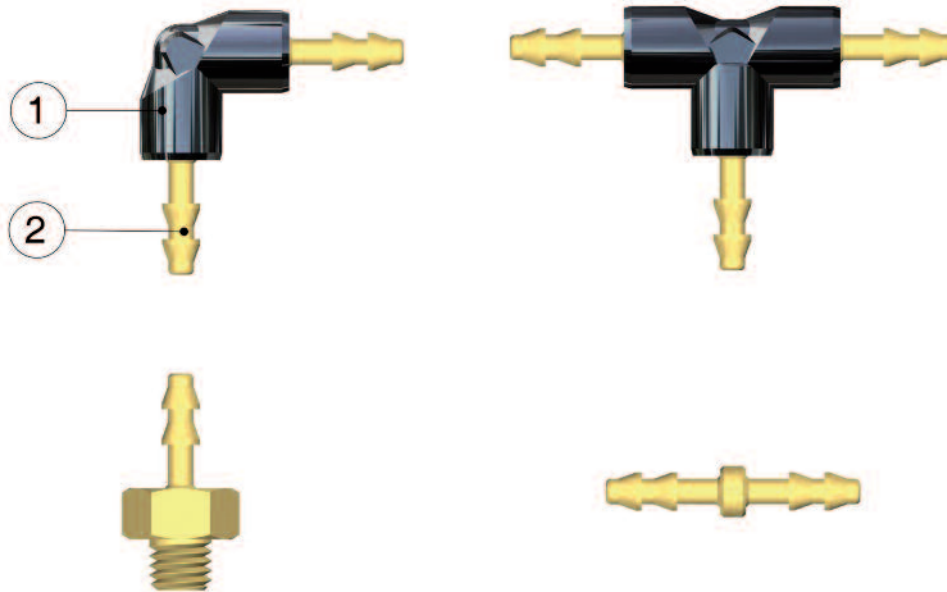


Serie/Series

15000

**RACCORDI PORTAGOMMA
PER TUBI IN MATERIALE PLASTICO**
HOSE ADAPTERS FOR PLASTIC TUBES

Caratteristiche Tecniche | Technical Characteristics



Scheda Materiali | Specifications

- 1 Corpo in Tecnopolimero
- 2 Portagomma in ottone

- 1 Technopolymer Body
- 2 Brass Hose Adapter

Pressioni | Pressures

Pressione minima / Minimum pressure: **-0.99 bar** (-0.099 MPa)
 Pressione massima / Maximum pressure: **10 bar** (1 MPa)

Temperature | Temperatures

Temperatura minima / Minimum temperature: **-10 °C**
 Temperatura massima / Maximum temperature: **+80 °C**

Filettature | Threads

Metrica conforme ISO R/262 / Metric in conformity with ISO R/262.

Fluidi compatibili | Fluids

Aria compressa / Compressed air.

Tubi di collegamento | Connection Tubes

Tubi in materiale plastico lineari:
 Poliuretano.

Flexible tubes in plastic:
 Polyurethane.

COME ORDINARE

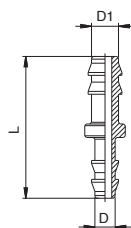
Per formulare un ordine é sufficiente specificare
 ARTICOLO, MISURA, QUANTITA'.

HOW TO ORDER

To order simply specify the ARTICLE CODE, SIZE and
 QUANTITY.

15040

RACCORDO PORTAGOMMA INTERMEDIO DIRITTO - STRAIGHT BULKHEAD HOSE ADAPTOR



D	D1	L	Conf. Pack.
2	- 2	20	50
3	- 2	20	50
3	- 3	20	50
4	- 3	21	50
4	- 4	22	50
6	- 4	22	50
6	- 6	22	50

1 5 0 0 0

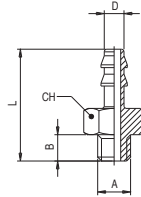
4 - 4

CODICE ARTICOLO
 ARTICLE CODE

MISURA
 SIZE

15000

RACCORDO PORTAGOMMA DIRITTO MASCHIO - STRAIGHT HOSE MALE ADAPTOR

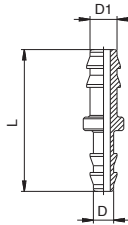


D	A	B	L	CH	Conf. Pack.
2	- M5	4	17	8	50
3	- M5	4	17	8	50
4	- M5	4	18	8	50
6	- M5	4	18	8	50



15040

RACCORDO PORTAGOMMA INTERMEDIO DIRITTO - STRAIGHT BULKHEAD HOSE ADAPTOR

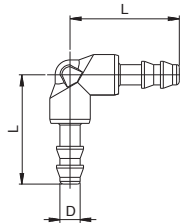


D	D1	L	Conf. Pack.
2	- 2	20	50
3	- 2	20	50
3	- 3	20	50
4	- 3	21	50
4	- 4	22	50
6	- 4	22	50
6	- 6	22	50



15130

RACCORDO PORTAGOMMA INTERMEDIO A L - BULKHEAD ELBOW HOSE ADAPTOR

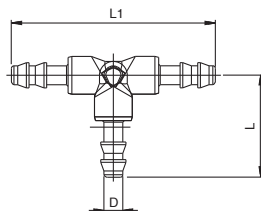


D	L	Conf. Pack.
2	17.5	50
3	17.5	50
4	22	50
6	22	50



15230

RACCORDO PORTAGOMMA INTERMEDIO A T - BULKHEAD TEE HOSE ADAPTOR



D	L	L1	Conf. Pack.
2	17.5	35	50
3	17.5	35	50
4	22	44	50
6	22	44	50

